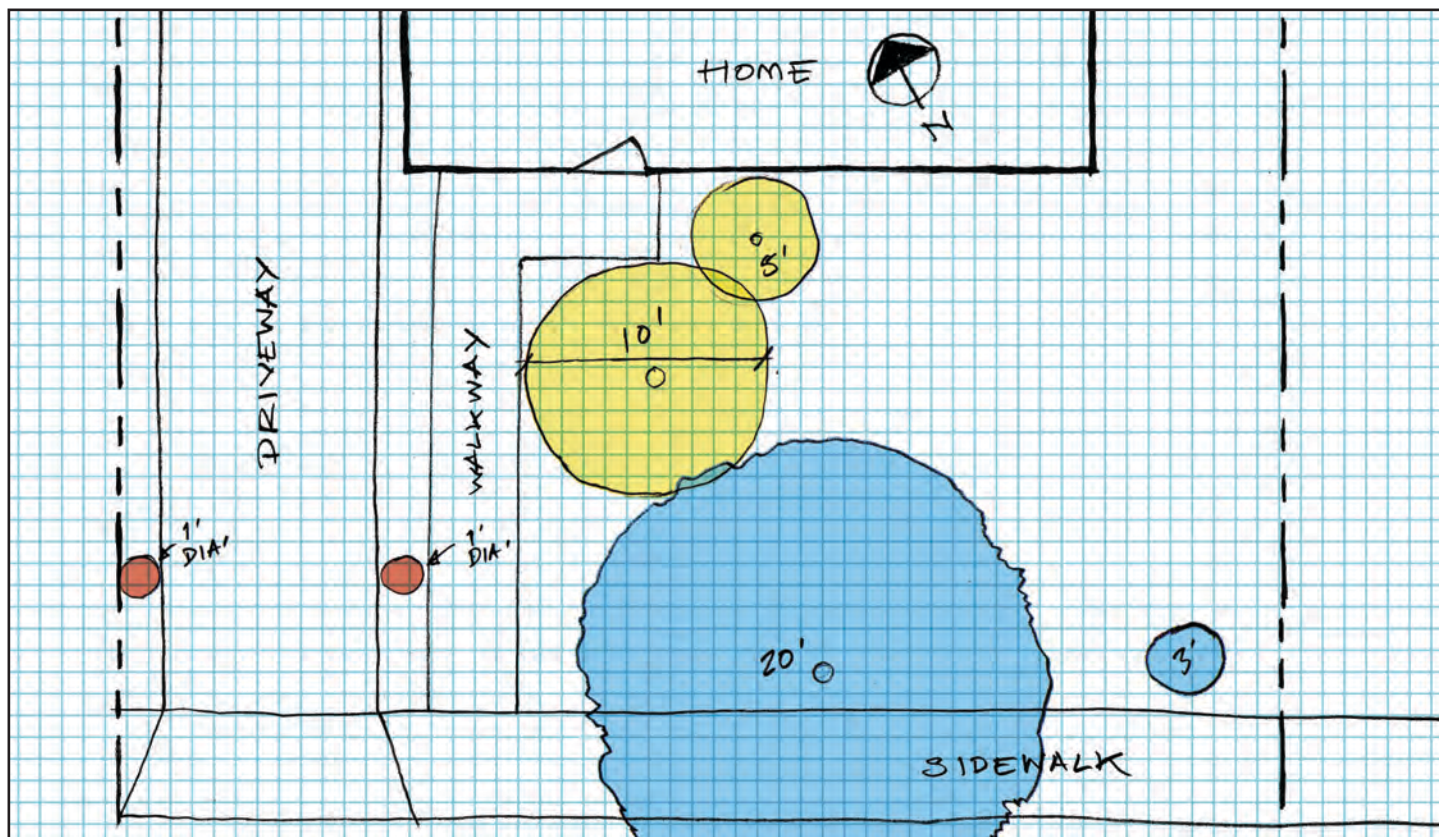


Make a **Hydrozoned** planting plan



© G3, Alex Stevens, 2020

A Guide to Plant Water Needs



Moderate



Low



Very Low

(see p. 31):

Group Plants by **Water Needs** and plan ahead for **Maturity**.

Proper plant placement, considering mature plant size, should limit the need for future pruning and reduce the amount of maintenance required in the long run. Natural forms are encouraged for habitat value, but fire prevention does require pruning and removal of dead, diseased, damaged and deranged plant material.

Scale Your Plants for Maturity

Make circles on your plan the size of the plant at maturity using a 1/4" = 1' scale (each box = 1').

Practice using colored paper to indicate the water needs of the plants. It will make it easier to lay out the planting plan in irrigation zones if you easily can move around the paper circles.

See on the plan how big the (MODERATE water use) 20' wide canopy trees will be at maturity. Will this change the microclimates in the future? Think ahead if your new trees will cover a whole yard that's now sunny.

Play By The Hydrozone Rules

- Plants with similar cultural and water requirements should be planted together in order to irrigate them efficiently.
- Consider the soil, water needs, sun/shade and temperature requirements for each hydrozone.
- Each hydrozone should be watered by a separate irrigation valve.
- Do not mix plants with different water requirements in the same hydrozone.
- Do not mix different irrigation types in the same hydrozone.
- The irrigation of each hydrozone should have matched precipitation (every nozzle needs to emit the same gallons per hour for drip).

Root depth matters

Make notes about the root depth of the plants when you are placing them on your plan. Trees, with their deep roots, will be irrigated less frequently, but for a longer time. Groundcovers with shallower roots will require more frequent watering. **Keep trees and groundcovers on separate hydrozones.**

Small plants are mighty

Once planted in a properly prepared bed, and watered wisely, small plants establish themselves more vigorously than plants raised in larger containers. But just because you've selected small plants, doesn't mean you need to buy more than the space allows when those plants reach maturity!